


Legend:

 Former DSCP Site Location



PENNSYLVANIA



Abbreviations
DSCP: Defense Supply Center Philadelphia

FORMER DEFENSE SUPPLY CENTER PHILADELPHIA

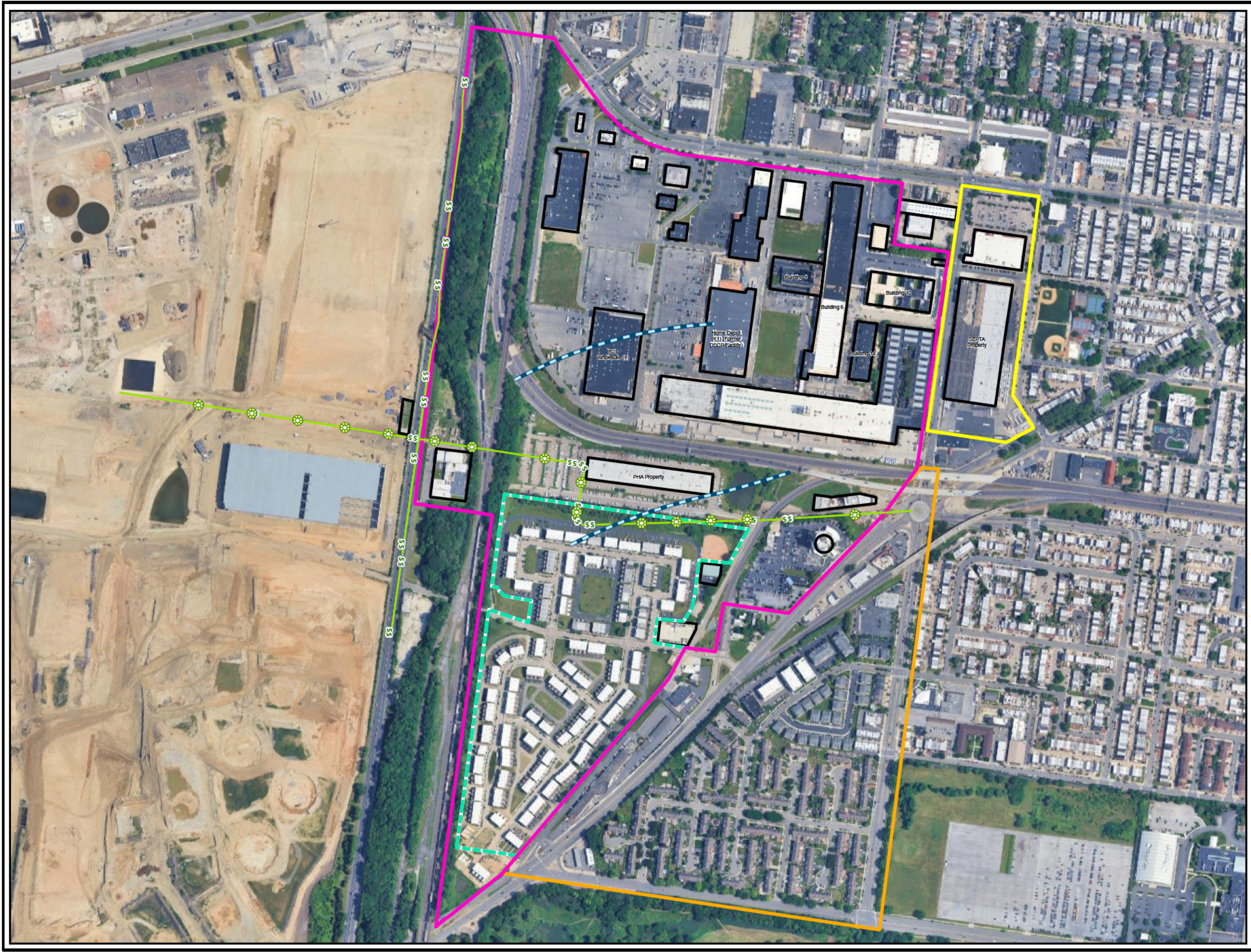
DRAFT REMEDIAL INVESTIGATION REPORT

SITE LOCATION



FIGURE

1



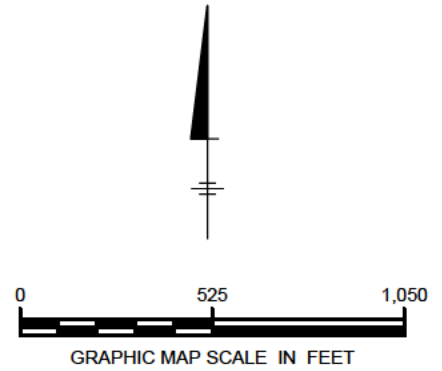
- LEGEND:**
- Manhole
 - Sewer Line
 - Interpreted Limits of the** "Hole/Breach"
 - Current Building
 - Extension of Deep Aquifer Site for Modeling Purposes
 - Extension of Vapor Intrusion Investigation
 - Siena Place Homes
 - Former DSCP Site Location (Shallow and Deep Aquifers)¹

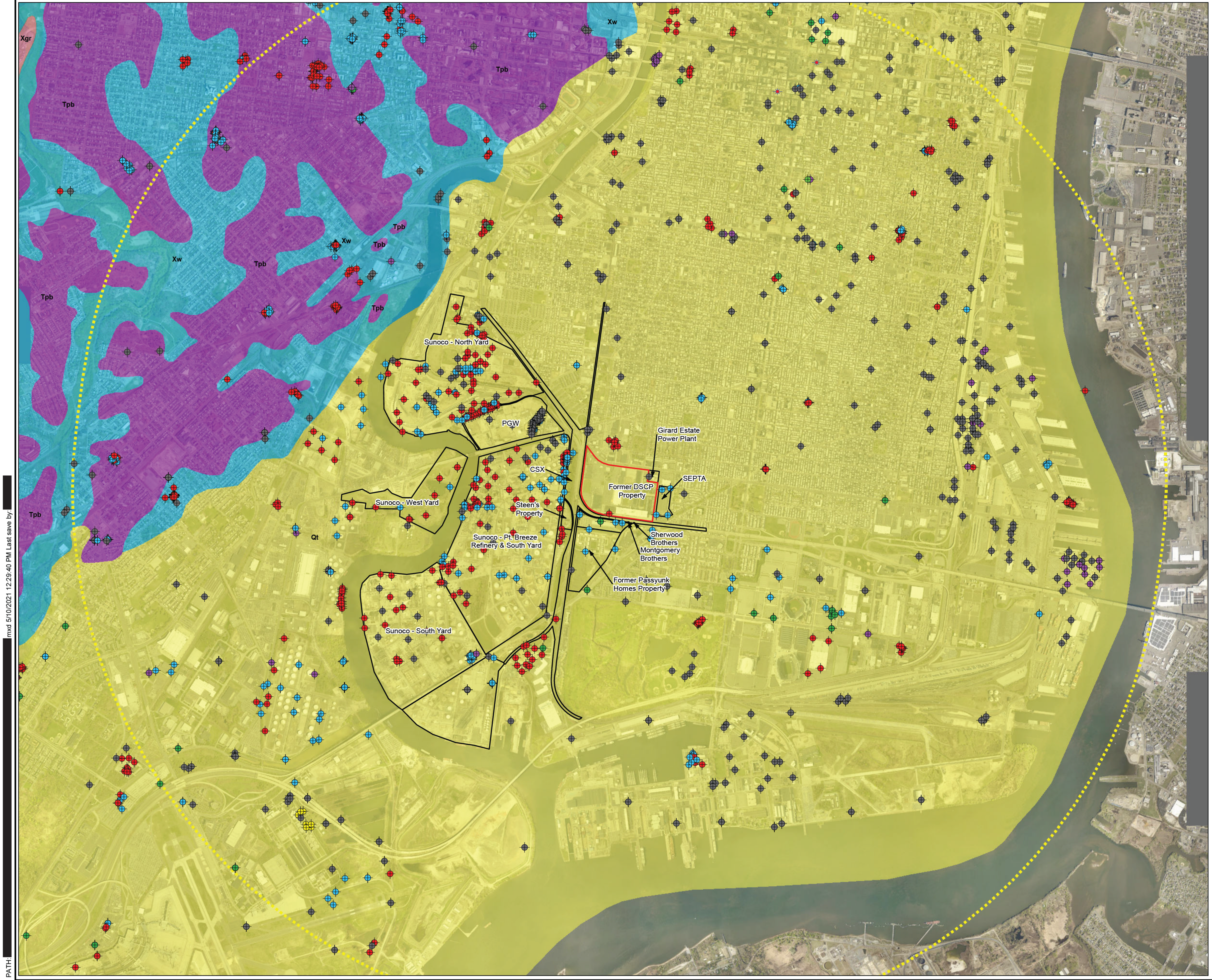
Notes:

1. The color coded lines define the land area that is the "Site" as defined under Act 2 and in the report text. Within the boundaries of the Site lies the LNAPL, and related petroleum hydrocarbon impacts to groundwater, soil, and vapor, for which release of liability under Act 2 is being pursued as required by the Administrative Order. The Act 2 Site includes the former DSCP facility, the Admin Order defined "Affected Area," and other properties that have been determined through characterization to contain the LNAPL and related GW, soil, and VI impacts.

** Approximate edges of the breach in the confining bed between the Site's shallow and deep aquifer zones as discussed during the March 6, 2013, meeting with the PADEP, DLA, and USACE

Abbreviations
 DLA: Defense Logistics Agency
 DSCP: Defense Supply Center Philadelphia
 GW: Groundwater
 LNAPL: Light Non-Aqueous Phase Liquid
 PADEP: Pennsylvania Department of Environmental Protection
 USACE: United States Army Corps of Engineers
 VI: Vapor Intrusion





PATH: \\msd\510\2021\12\29\40 PM Last save by: [unclear]

Legend

- Former DSCP Property Boundary
- Surrounding Properties Boundary
- 3-Mile Radius of Site

Pumping Well Search Results

- ◆ Aquaculture Withdrawal Well Location
- ◆ Commercial Withdrawal Well Location
- ◆ Dewater Withdrawal Well Location
- ◆ Domestic Withdrawal Well Location
- ◆ Institutional/Industrial Withdrawal Well Location
- ◆ Public Supply Withdrawal Well Location
- ◆ Other Withdrawal Well Location
- ◆ Unknown Withdrawal Well Location
- ◆ Unused Well Location
- ★ Geothermal Well Location


Geologic Unit

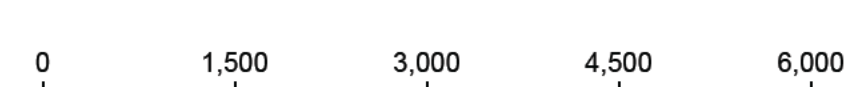
- Qt - Fill deposits, Holocene marsh/alluvial Deposits, and Trenton Gravel (Pleistocene) Formation
- Tpb -Pensauken and Bridgeton Formation, undifferentiated
- Xw - Wissahickon Formation
- Xgr- Granitic Gneiss and Granite Formation
- Xmgh - Mafic Gneiss, Hornblende-Bearing

Source:

- Geologic data - The U.S. Department of Agriculture (USDA), 2005, (accessed via web on March 28, 2012)
- Well data - PA Topographic & Geologic Survey database (accessed via web on July 12, 2020)

Abbreviations
DSCP: Defense Supply Center Philadelphia





SCALE IN FEET

FORMER DEFENSE SUPPLY CENTER PHILADELPHIA
DRAFT REMEDIAL INVESTIGATION REPORT

SITE GEOLOGY MAP WITH LOCAL WELLS WITHIN 3-MILE RADIUS


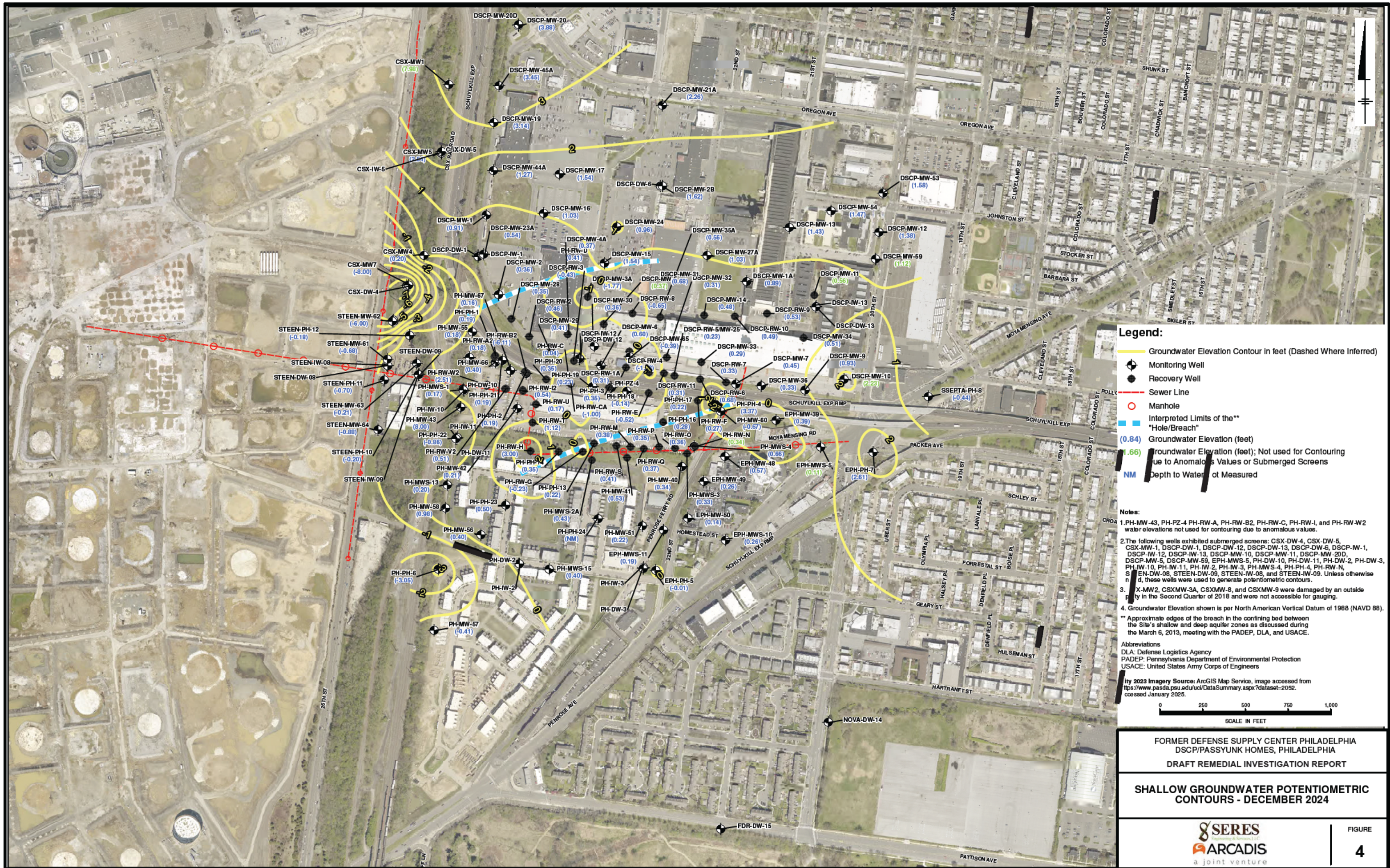


FIGURE
3



Legend:

- Groundwater Elevation Contour in feet (Dashed Where Inferred)
- Monitoring Well
- Recovery Well
- Sewer Line
- Manhole
- Interpreted Limits of the "Hole/Breach"
- (0.84) Groundwater Elevation (feet)
- (1.66) Groundwater Elevation (feet); Not used for Contouring due to Anomalous Values or Submerged Screens
- NM Depth to Water of Measured

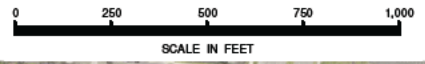
Notes:

1. PH-MW-43, PH-PZ-4, PH-RW-A, PH-RW-B2, PH-RW-C, PH-RW-I, and PH-RW-W2 water elevations not used for contouring due to anomalous values.
2. The following wells exhibited submerged screens: CSX-DW-4, CSX-DW-5, CSX-MW-1, DSCP-DW-1, DSCP-DW-12, DSCP-DW-13, DSCP-DW-6, DSCP-IW-1, DSCP-IW-12, DSCP-IW-13, DSCP-MW-10, DSCP-MW-11, DSCP-MW-20D, DSCP-MW-5, DSCP-MW-59, EPH-MWS-5, PH-DW-10, PH-DW-11, PH-DW-2, PH-DW-3, PH-IW-10, PH-IW-11, PH-IW-2, PH-IW-3, PH-MWS-4, PH-PH-4, PH-RW-N, STEEN-DW-08, STEEN-DW-09, STEEN-IW-08, and STEEN-IW-09. Unless otherwise noted, these wells were used to generate potentiometric contours.
3. CSX-MW-2, CSX-MW-3A, CSX-MW-8, and CSX-MW-9 were damaged by an outside party in the Second Quarter of 2018 and were not accessible for gauging.
4. Groundwater Elevation shown is per North American Vertical Datum of 1988 (NAVD 88).

** Approximate edges of the breach in the confining bed between the Site's shallow and deep aquifer zones as discussed during the March 6, 2013, meeting with the PADEP, DLA, and USACE.

Abbreviations
 DLA: Defense Logistics Agency
 PADEP: Pennsylvania Department of Environmental Protection
 USACE: United States Army Corps of Engineers

Imagery Source: ArcGIS Map Service, image accessed from <https://www.pasda.psu.edu/ucf/DataSummary.aspx?dataset=2052>. Accessed January 2025.

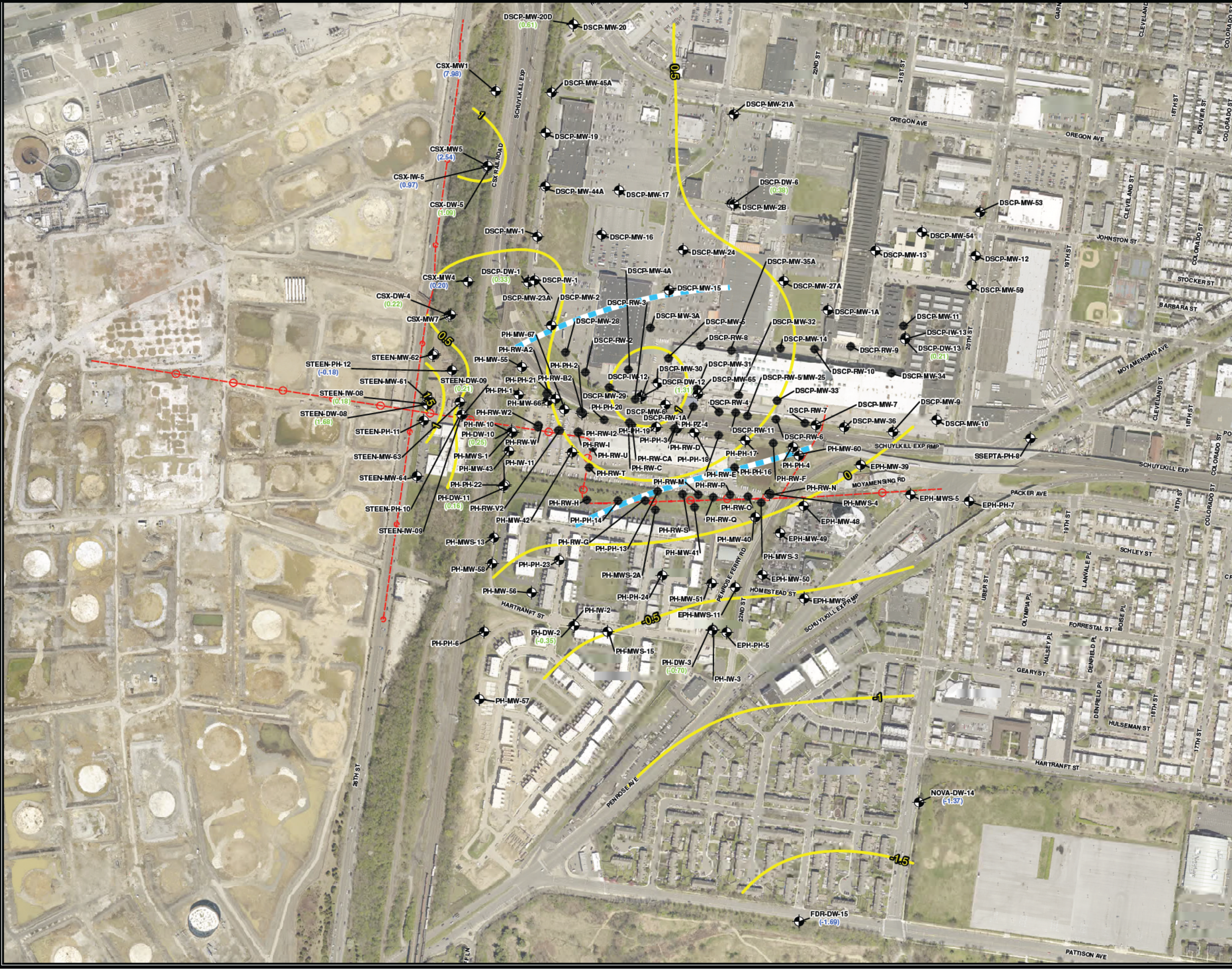


FORMER DEFENSE SUPPLY CENTER PHILADELPHIA
 DSCP/PASSYUNK HOMES, PHILADELPHIA
 DRAFT REMEDIAL INVESTIGATION REPORT

SHALLOW GROUNDWATER POTENTIOMETRIC CONTOURS - DECEMBER 2024



s_402024.mxd DATE: 1/31/2025



Legend:

- Groundwater Elevation Contour in feet (Dashed Where Inferred)
- Monitoring Well
- ◆ Recovery Well
- Sewer Line
- Manhole
- Interpreted Limits of the** "Hole/Breach"
- 0.84 Groundwater Elevation (feet)
- 1.66 Groundwater Elevation (feet); Not used for Contouring due to Anomalous Values or Submerged Screens
- NM Depth to Water Not Measured

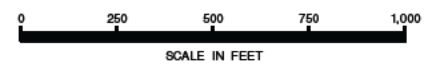
Notes:

** Approximate edges of the breach in the confining bed between the Site's shallow and deep aquifer zones as discussed during the March 6, 2013, meeting with the PADEP, DLA, and USACE.

* Not used in contouring.

Abbreviations
 DLA: Defense Logistics Agency
 PADEP: Pennsylvania Department of Environmental Protection
 USACE: United States Army Corps of Engineers

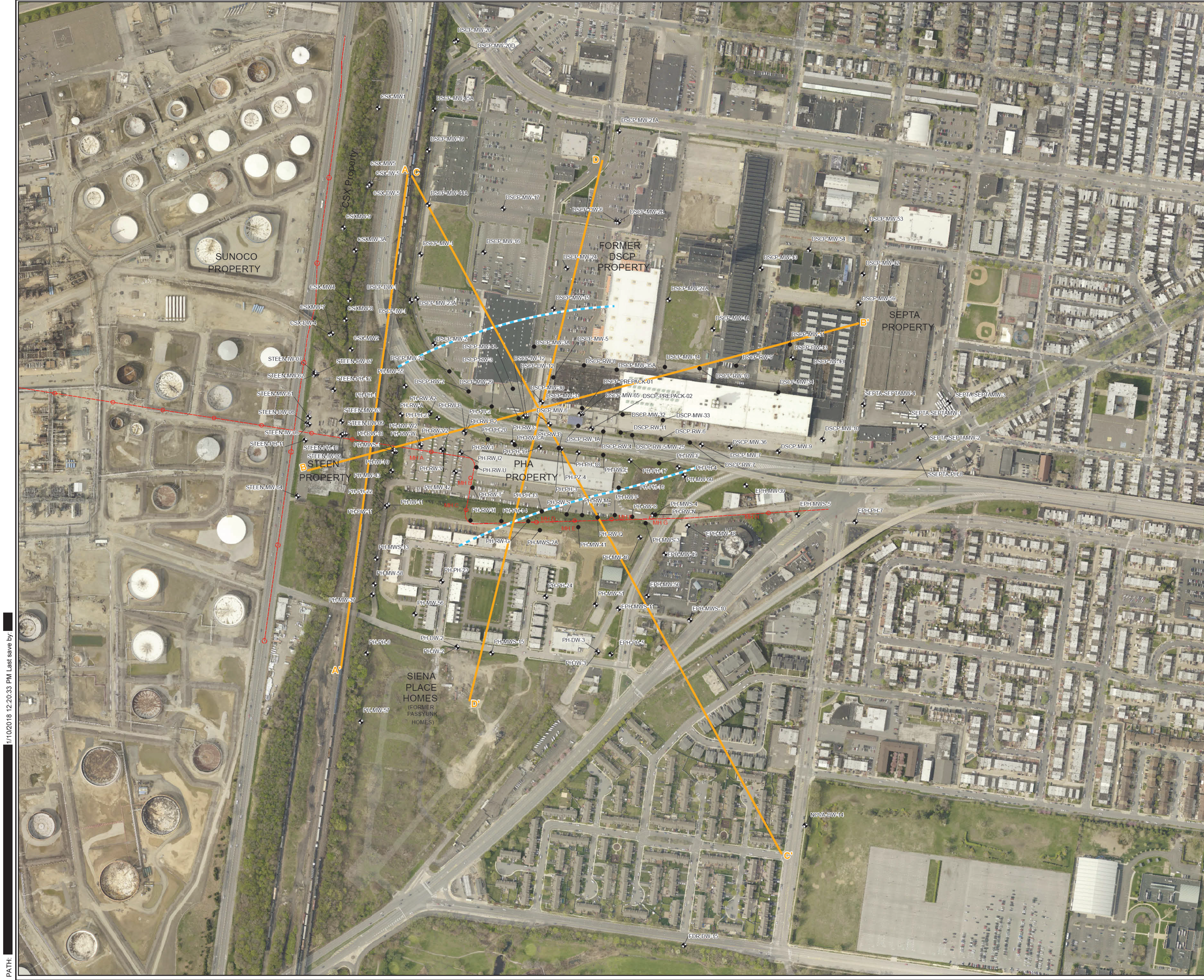
City 2023 Imagery Source: ArcGIS Map Service, image accessed from <https://www.pasda.psu.edu/ucf/DataSummary.aspx?dataset=2052>. Accessed October 2024.



FORMER DEFENSE SUPPLY CENTER PHILADELPHIA
 DSCP/PASSYUNK HOMES, PHILADELPHIA
 DRAFT REMEDIAL INVESTIGATION REPORT

**DEEP GROUNDWATER POTENTIOMETRIC
 CONTOURS - DECEMBER 2024**





Legend:

- Cross Section Line
- ◆ Monitoring Well
- Recovery Well
- Manhole
- Sewer Line
- - - Interpreted Limits of the** "Hole/Breach"

Notes:

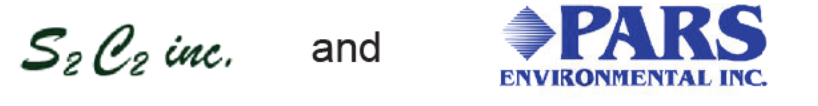
1. Downgradient deep wells FDR-DW-15 and NOVA-DW-14 installations were completed on April 19, 2017, and April 26, 2017.

** Approximate edges of the breach in the confining bed between the Site's shallow and deep aquifer zones as discussed during the March 6, 2013, meeting with the PADEP, DLA, and USACE

Abbreviations

- DLA: Defense Logistics Agency
- PADEP: Pennsylvania Department of Environmental Protection
- PHA: Philadelphia Housing Authority
- SEPTA: Southeastern Pennsylvania Transportation Authority
- USACE: United States Army Corps of Engineers

Figure produced in conjunction with:



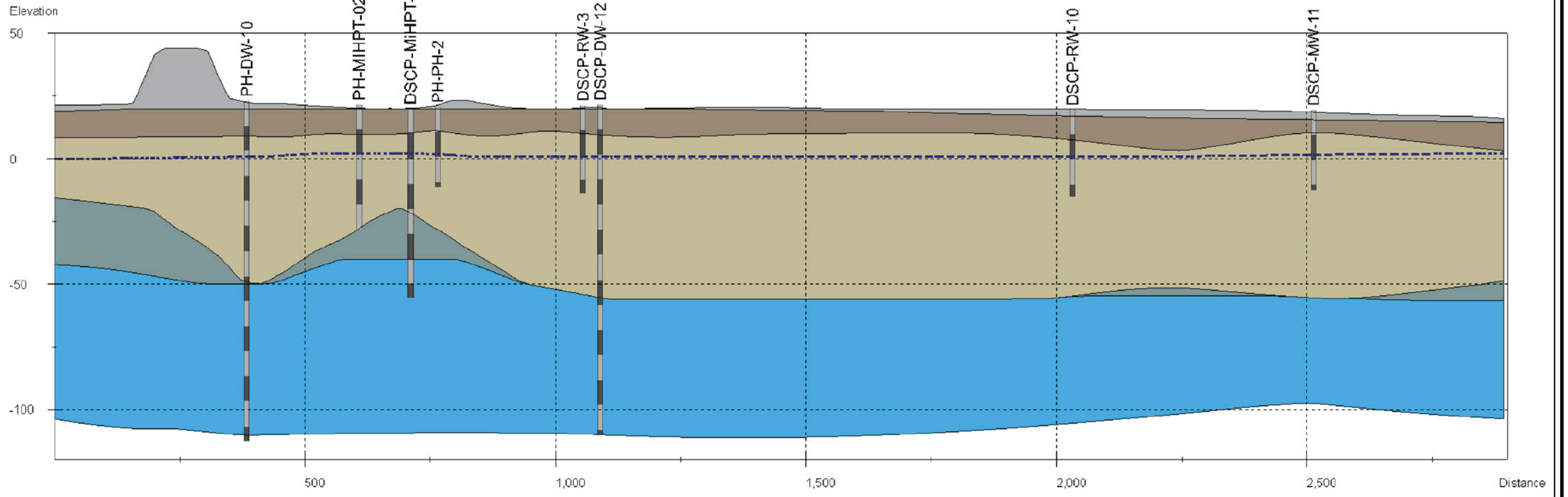
FORMER DEFENSE SUPPLY CENTER PHILADELPHIA
DRAFT REMEDIAL INVESTIGATION REPORT

CROSS SECTION LOCATIONS



FIGURE
6

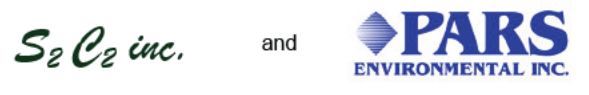
PATH: 1/10/2018 12:20:33 PM Last save by:




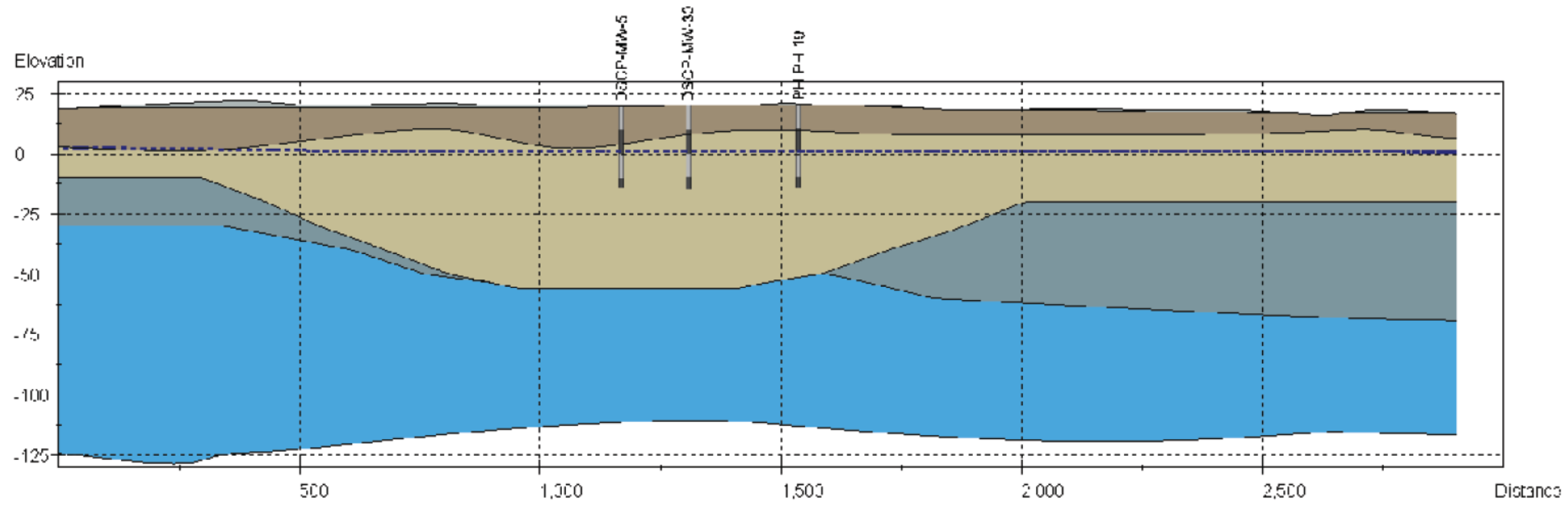
Vertical Exaggeration is 5x

- Material**
- Fill
 - Upper Silt
 - Trenton Gravel/Breach
 - Confining Clay
 - Lower Sand

Notes:
Figure produced in conjunction with:



FORMER DEFENSE SUPPLY CENTER PHILADELPHIA DRAFT REMEDIAL INVESTIGATION REPORT	
GEOLOGIC CONCEPTUAL SITE MODEL SECTION BB'	
 <small>a joint venture</small>	FIGURE 7



Vertical Exaggeration is 5x

- Material**
- Fill
 - Upper Silt
 - Trenton Gravel/Breach
 - Confining Clay
 - Lower Sand

Notes:

Figure produced in conjunction with:



and



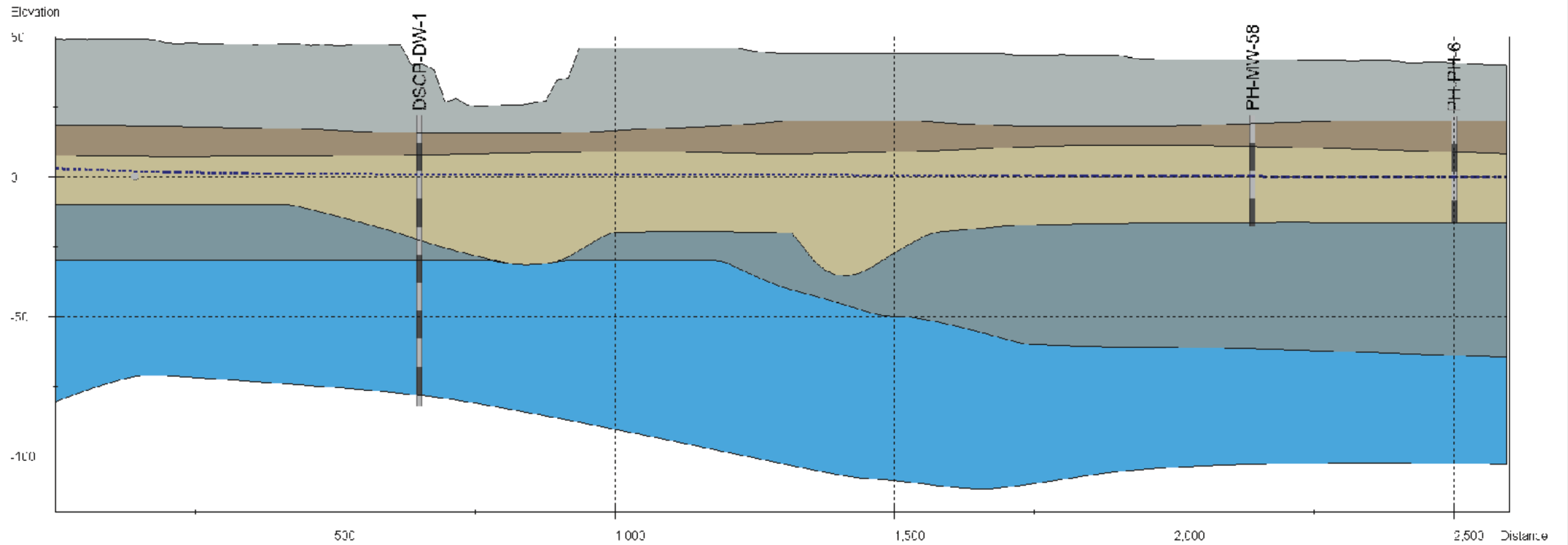
FORMER DEFENSE SUPPLY CENTER PHILADELPHIA
DRAFT REMEDIAL INVESTIGATION REPORT

**GEOLOGIC CONCEPTUAL SITE MODEL
SECTION DD'**



FIGURE

8



Vertical Exaggeration is 5x

- Material**
- Fill
 - Upper Silt
 - Trenton Gravel/Breach
 - Confining Clay
 - Lower Sand

Notes:

Figure produced in conjunction with:



and



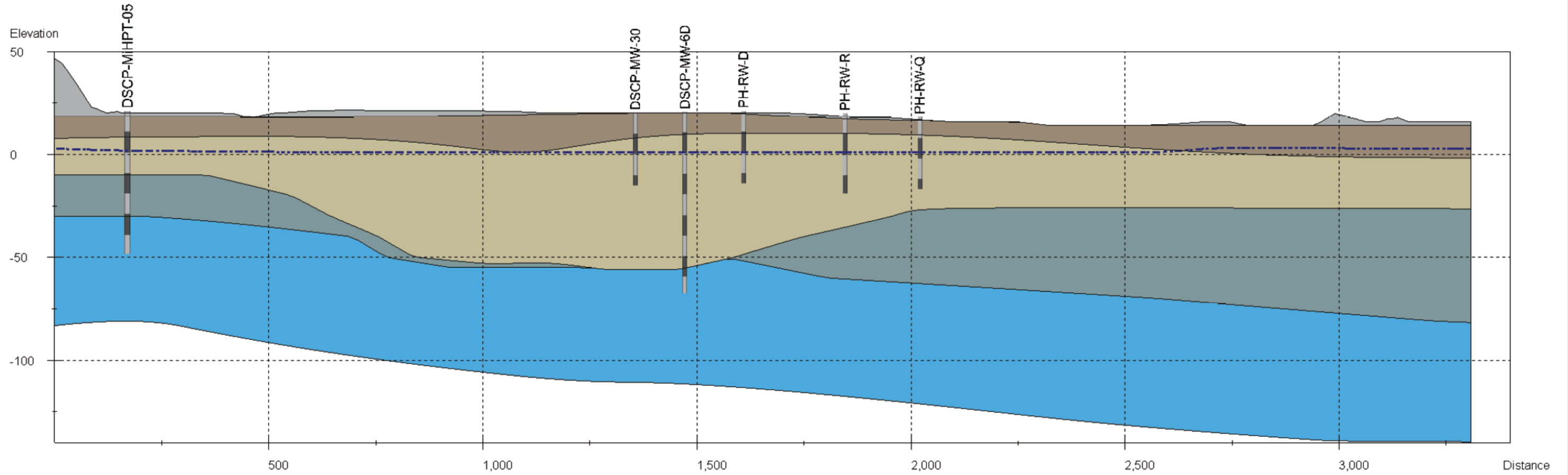
FORMER DEFENSE SUPPLY CENTER PHILADELPHIA
DRAFT REMEDIAL INVESTIGATION REPORT

**GEOLOGIC CONCEPTUAL SITE MODEL
SECTION AA'**



FIGURE

9



Vertical Exaggeration is 5x

- Material**
- Fill
 - Upper Silt
 - Trenton Gravel/Breach
 - Confining Clay
 - Lower Sand

Notes:

Figure produced in conjunction with:



and



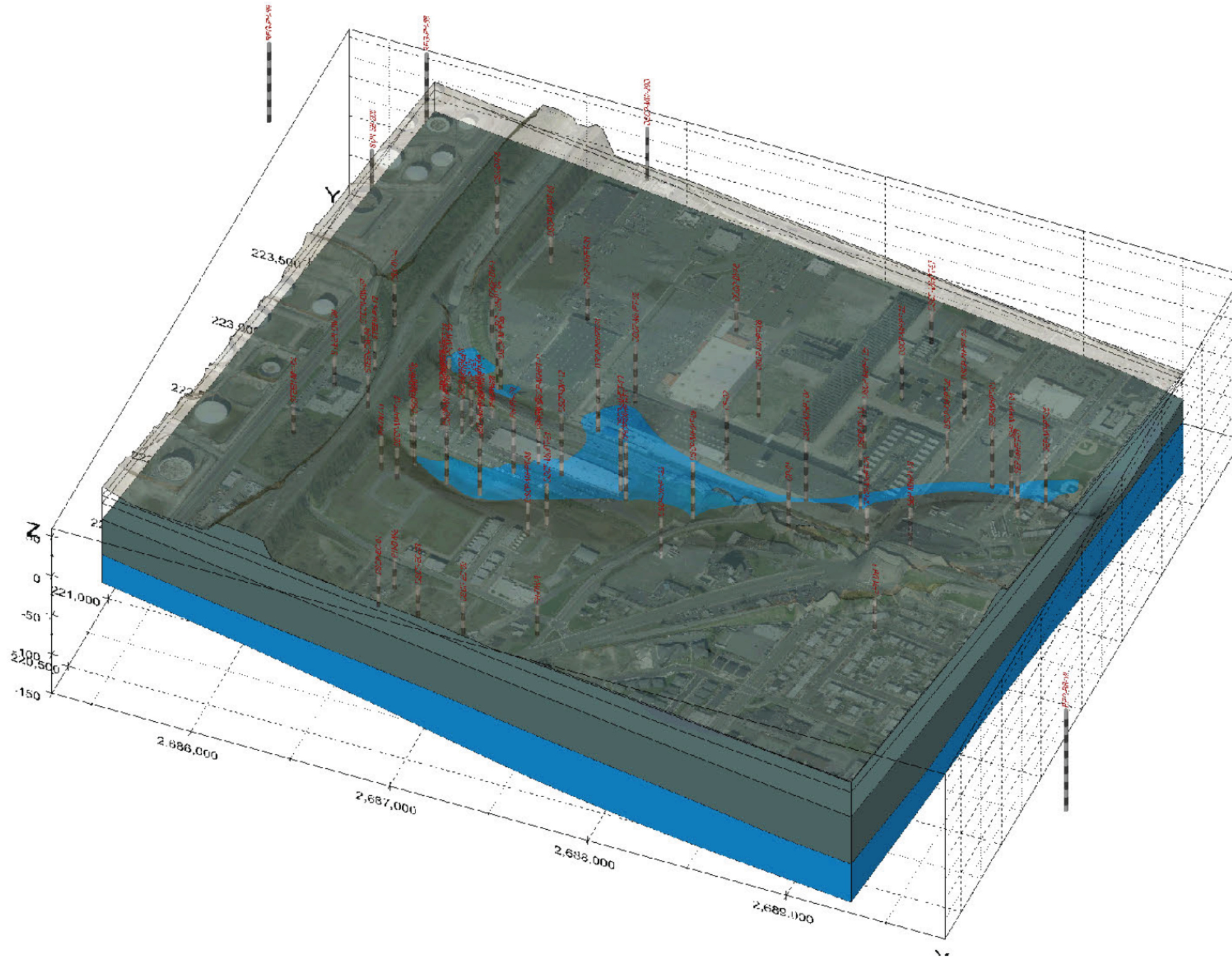
FORMER DEFENSE SUPPLY CENTER PHILADELPHIA
DRAFT REMEDIAL INVESTIGATION REPORT

**GEOLOGIC CONCEPTUAL SITE MODEL
SECTION CC'**



FIGURE

10



Vertical Exaggeration is 5x

Reinterpreted Geology

- Topography
- Upper Silt
- Trenton Gravel/Breach
- Confining Clay
- Lower Sand

Notes:

Figure produced in conjunction with:

S₂C₂ inc.

and

PARS
ENVIRONMENTAL INC.

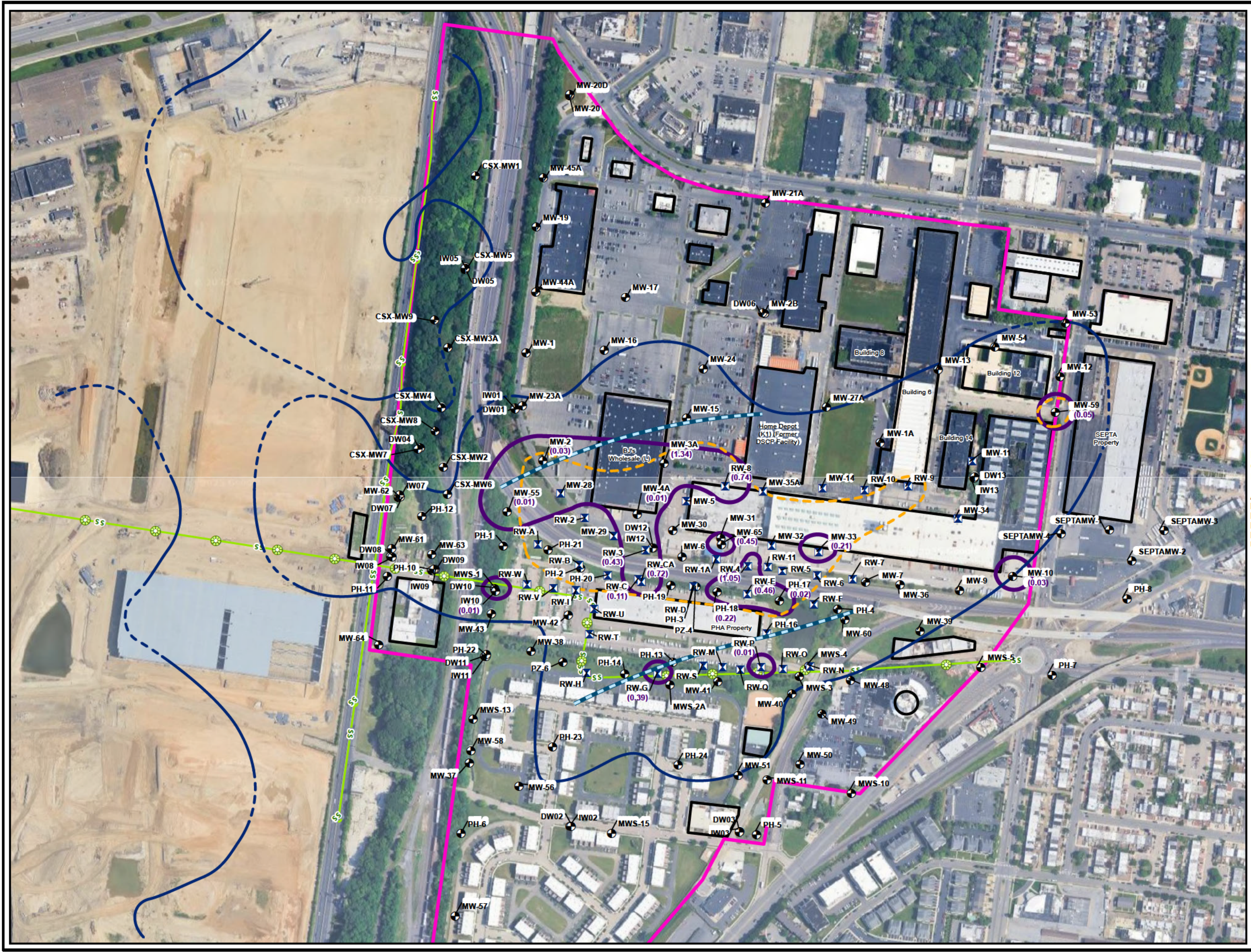
FORMER DEFENSE SUPPLY CENTER PHILADELPHIA
DRAFT REMEDIAL INVESTIGATION REPORT

**GEOLOGIC CONCEPTUAL SITE MODEL
OBLIQUE VIEW**

SERES
ARCADIS
a joint venture

FIGURE

11



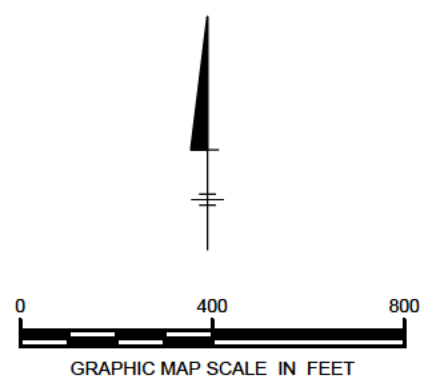
- LEGEND:**
- Manhole
 - Monitoring
 - Recovery
 - (0.05)** Groundwater Elevation (feet); Not used for Contouring due to Anomalous Values or Submerged Screens
 - Approximate LNAPL Extent (December 2024)
 - Approximate LNAPL Extent (September 2019, Dashed Where Inferred)
 - Approximate LNAPL Extent (October 2002, Dashed Where Inferred)
 - Sewer Line
 - Interpreted Limits of the "Hole/Breach"
 - Current Building
 - Former DSCP Site Location (Shallow and Deep Aquifers)¹

Notes:

1. Figure shows new presentation of apparent LNAPL extent, which does not necessarily indicate inconsistent in-situ LNAPL saturation, volume, mobility, or recoverability.

** Approximate edges of the breach in the confining bed between the Site's shallow and deep aquifer zones as discussed during the March 6, 2013, meeting with the PADEP, DLA, and USACE

Abbreviations
 DLA: Defense Logistics Agency
 DSCP: Defense Supply Center Philadelphia
 LNAPL: Light Non-Aqueous Phase Liquid
 PADEP: Pennsylvania Department of Environmental Protection
 USACE: United States Army Corps of Engineers





Legend:

- Inferred Extent of Product (September 2017)
- - - Inferred Extent of Product (October 2002, dashed where inferred)
- + Monitoring Well
- Recovery Well
- Manhole
- Sewer Under Vacuum
- Buildings with Basements
- No VI System or Unknown
- Sewer Vacuum System
- VI System (Barrier or Passive Vent)
- VI System (Basement Fans)

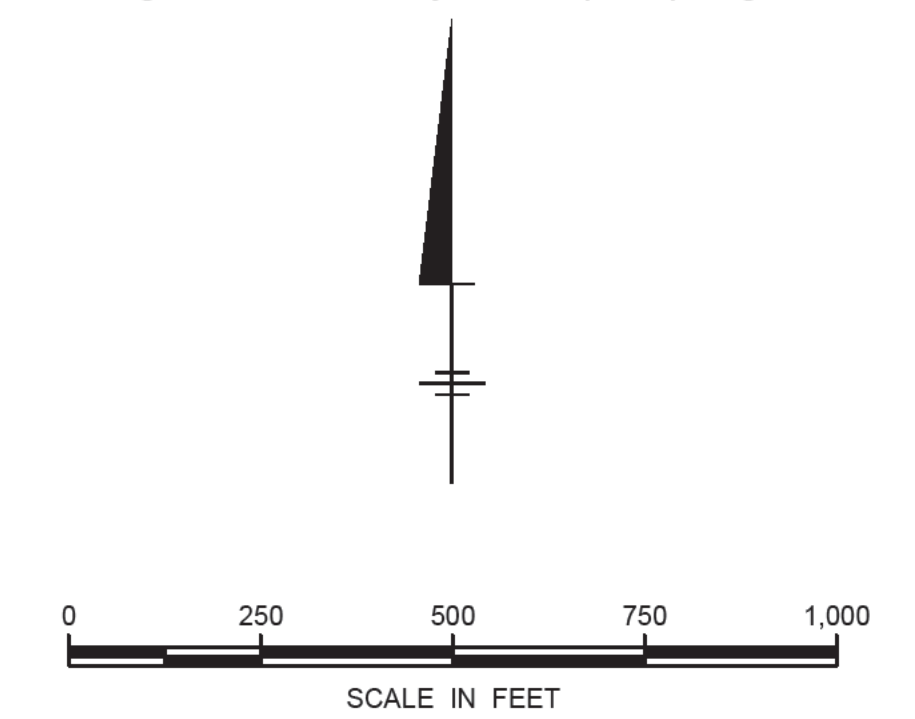
Notes:

The apparent LNAPL thickness contours are approximate and do not necessarily indicate consistent in-situ LNAPL saturation, volume, mobility or recoverability. Measured LNAPL thickness is influenced spatially by heterogeneous LNAPL and hydrogeologic characteristics, and temporally by groundwater level fluctuations.

** Approximate edges of the breach in the confining bed between the Site's shallow and deep aquifer zones as discussed during the March 6, 2013, meeting with the PADEP, DLA, and USACE

Abbreviations:
 DLA: Defense Logistics Agency
 LNAPL: Light Non-Aqueous Phase Liquid
 PADEP: Pennsylvania Department of Environmental Protection
 USACE: United States Army Corps of Engineers
 VI: Vapor Intrusion

Imagery Source: ArcGIS Map Service, image accessed via internet from <http://tiles.arcgis.com/tiles/fLEgjb7u4uXqF9q/arcgis/rest/services>



PATH: \\... 11/02/2018 2:15:43 PM. Last save by: ...



Legend:

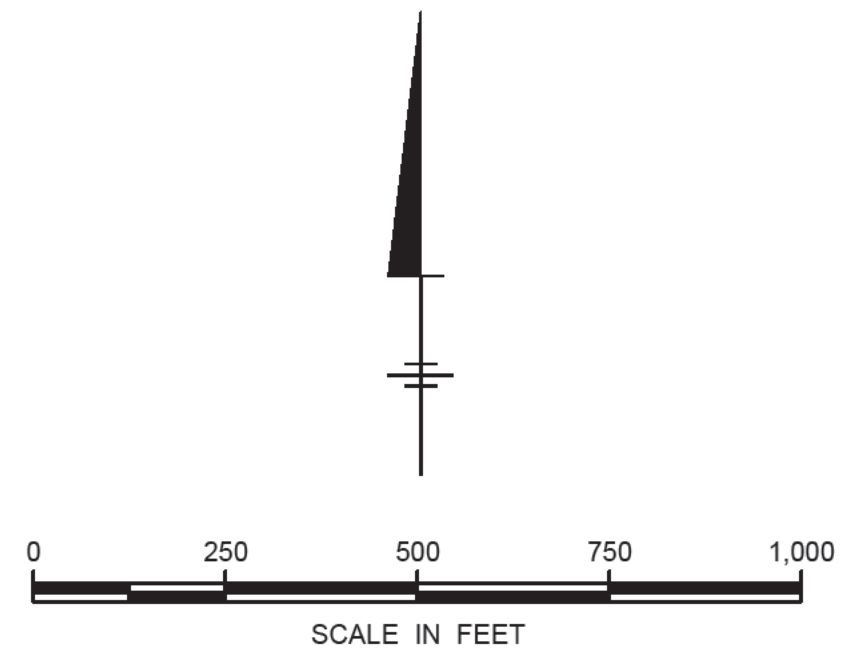
- ◆ Monitoring Well
- Recovery Well
- Sewer Line
- Manhole
- Interpreted Limits of the** "Hole/Breach"

Notes:

** Approximate edges of the breach in the confining bed between the Site's shallow and deep aquifer zones as discussed during the March 6, 2013, meeting with the PADEP, DLA, and USACE

Abbreviations:

DLA: Defense Logistics Agency
 PADEP: Pennsylvania Department of Environmental Protection
 USACE: United States Army Corps of Engineers



FORMER DEFENSE SUPPLY CENTER PHILADELPHIA
 DRAFT REMEDIAL INVESTIGATION REPORT

MONITORING WELL LOCATIONS



1/11/2018 11:12:24 AM Last saved by: PATH-Z



mxd DATE: 2/3/2025

- Legend:**
- Approximate LNAPL Extent
 - Monitoring Well
 - Recovery Well
 - Sewer Line
 - Manhole
 - Interpreted Limits of the** "Hole/Breach"
 - 0.84 Groundwater Elevation (feet)
 - 1.66 Groundwater Elevation (feet); Not used for Contouring due to Anomalous Values or Submerged Screens
 - NM Depth to Water Not Measured

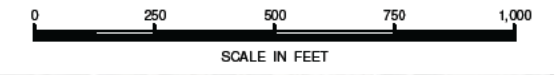
Notes:

1. Figure shows new presentation of apparent LNAPL extent, which does not necessarily indicate inconsistent in-situ LNAPL saturation, volume, mobility, or recoverability.

** Approximate edges of the breach in the confining bed between the Site's shallow and deep aquifer zones as discussed during the March 6, 2013, meeting with the PADEP, DLA, and USACE.

Abbreviations:
 DLA: Defense Logistics Agency
 LNAPL: Light Non-Aqueous Phase Liquid
 PADEP: Pennsylvania Department of Environmental Protection
 USACE: United States Army Corps of Engineers

City 2023 Imagery Source: ArcGIS Map Service, Image accessed from <https://www.pasda.psu.edu/ucf/DataSummary.aspx?dataset=2052>. Accessed October 2024.



FORMER DEFENSE SUPPLY CENTER PHILADELPHIA
 DSCP/PASSYUNK HOMES, PHILADELPHIA
 DRAFT REMEDIAL INVESTIGATION REPORT

LNAPL EXTENT IN MONITORING AND RECOVERY WELLS - DECEMBER 2024

